

WILLOW
GALLERY
OSWESTRY



Newsletter

December 2018



RUTH GIBSON

Porcelain bowls & platters

[CHRISTMAS CRAFT FAIRS](#)
[EXHIBITIONS](#) [AN ARTIST TO WATCH](#) [FRIDA'S WORLD](#) [A GREAT POET](#) [VERA PLAYS](#)
[LIVE WORKSHOPS & COURSES](#) [ART FOR CHILDREN](#) [OTHER CLASSES](#)
[ABOUT US](#) [CONTACT US](#)

CHRISTMAS CRAFT FAIRS

Pick up unusual gifts for Christmas

Featuring artwork and hand-crafted items made by local artisans

Saturday 1 & Saturday 8 December

10am-5pm

Free entry - All welcome

EXHIBITIONS

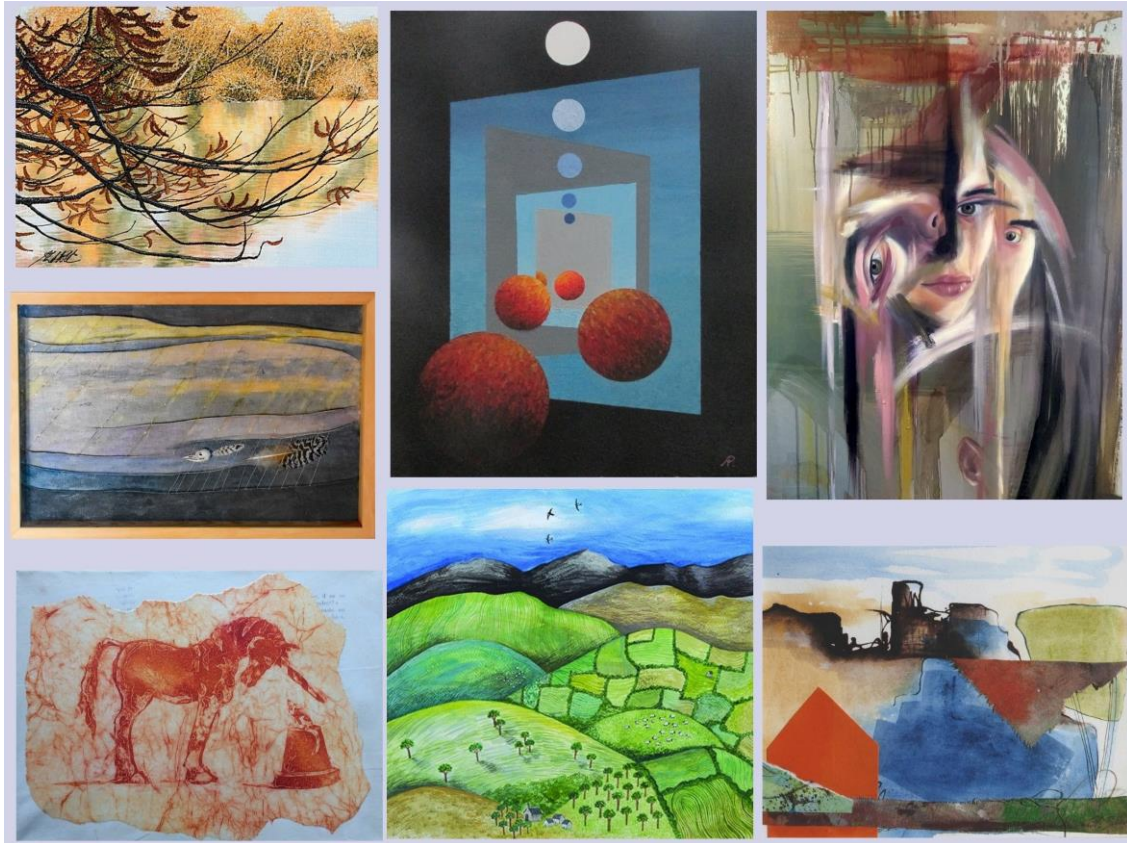
WINTER OPEN

Including AFFORDABLE ART

FESTIVE ARTS & CRAFTS

Until 12 Jan 2019

See a selection of contemporary artworks by members of Borderland Visual Arts, all with modest price tags. Alongside this, our Festive Arts & Crafts Exhibition offers, also from local makers, a wide range of gifts and fine art for fabulous Christmas shopping. Also on show, an open-submission of paintings and other works celebrates the work of artists from Shropshire and beyond.



CLOCKWISE FROM TOP LEFT: ALISON HOLT *Across the Mere* (Machine embroidery); ALAN PALMER *Upon Reflection* (Acrylic); TESSA PARRY *Staccatissimo* - detail (Oil on canvas); GILL CROZIER *Walking the Mines* (Collage & ink); SOPHIE SHAW *The Rolling Hills* (Gouache & watercolour); JUDITH HARRISON *The Unicorn & the Mouse* (Collagraph print); ROS HORNBUCKLE *Fragile Earth - Storm Cloud on the Racecourse* (Mixed media)

Every Miner's Lamp Tells a Story

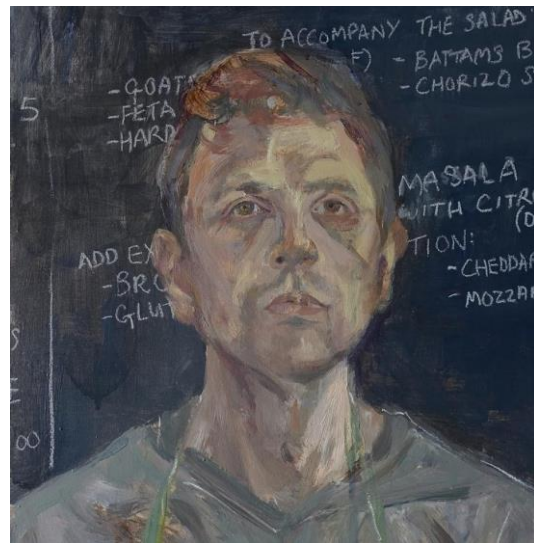
In a series of oil paintings on canvas, Holly Hayward shares the memories of ex-miners and follows each story through to the following generations. 'Coal mining once dominated the Borderlands, North Wales and the communities within, and there is a wealth of unknown knowledge to share. The variety of characters I meet warrants a constant change of palette according to narrative and totally suits my need for progression and discovery.' One of the last Shropshire mines to close was Ifton Colliery, located in the district of St Martins near Oswestry, first sunk in the 19th century as the Gertrude Shaft.



ABOVE LEFT TO RIGHT: *Tommy Nain*; *The Gertrude Shaft*; *Martha & the Miner's Lamp*

New ventures

We recently said farewell to Jason Turner, a familiar face at Willow Eatery and here portrayed by artist-in-residence David Bannister. Artisan cake-maker, friendly factotum, longdistance cyclist and skilled photographer, Jason has worked down at Pinewood Studios over recent months, and we wish him the very best in all his future endeavours.



TEEN ARTIST AT THE WILLOW

Currently displayed on our feature wall, a collection of very accomplished landscape paintings by young artist George Lennon Davies. Currently in Year 10 at school, George has exhibited at London's National Open Art, Chester Grosvenor Open and Castle Park (Frodsham) Open. He was the Society of All Artists Junior overall winner 2015 at the age of 11.

George's passion for wildlife, the great outdoors and conservation lies at the heart of his painting.

Working in oils, he enjoys the challenge of painting outdoors, and the dramatic North Wales and Scottish landscape provides the inspiration for much of his current work.



ABOVE: *Snowdonia Magic* ~ Oil on board



RIGHT: *Lightspout* ~ Oil on board

NEW YEAR OPEN

19 Jan - 9 March

Mixed-discipline show celebrating an array of artistic talent - including newcomers as well as more established names

PAINTING WITH WORDS 2019

16 March - 11 May

Art inspired by poetry and prose - now an annual event and always a feast for the eyes



The gallery can offer interest-free loans repayable over 10 months for the purchase of any kind of contemporary art or craft. The minimum loan amount is £100. This can be for the purchase of a single item or for a group of smaller purchases where the combined value is £100 or more - particularly handy around Christmastime! Please ask at the desk for details.

A CALENDAR WORTH RAISING MONEY FOR

Oswestry Life magazine has produced a 2019 calendar with all the proceeds going to our local hospice charity, Hope House. Featuring photos of 12 local scenes by local photographer Graham

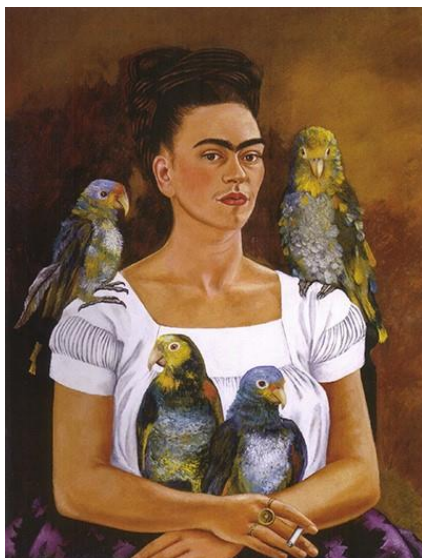
Mitchell, the calendar is available at the Willow Gallery or you can order from *Oswestry Life* [website](#). Please support a great cause for only £6.50.



ABOVE Oswestry Heritage & Exhibition Centre

FRIDA'S WORLD

In November Brazilian storyteller Ana Maria Lines beguiled us with an intimate look into the life of Mexican painter Frida Kahlo, best known for her uniquely revealing self-portraits. Born in 1907, Frida lived most of her life in pain following a crippling accident. She had a rollercoaster of a marriage to celebrated muralist Diego Rivera, wore traditional Mexican dress, embraced communism, was a lover of Trotsky. She died in 1954, and today what would she think of her image on a T-shirt or being turned into a Barbie doll...



Unfolding the artist's intense personal life, Ana tells her audience how she had a series of dreams in which Frida tells her own story. We are grateful to Ana for giving us such a wonderful taste of the joy and pain of Frida's world and the legacy that lives on in her art. Ana, we'd love to see you back!



LEFT: FRIDA KAHLO *Me & My Parrots* [1941]

WILFRED OWEN STATUE

A striking life-size statue in bronze of soldier poet Wilfred Owen MC has been unveiled in Oswestry, his birthplace. From the front line Owen wrote about the true horrors of the First World War - and poignantly was killed in action just days before the Armistice. Sited in Cae Glas Park, the statue shows Owen in army uniform with pencil and notebook in hand, surrounded by poems. The statue was created by local artist and sculptor Tim Turner and cast at world-renowned Castle Fine Arts Foundry in nearby Llanraeadr-ym-Mochnant.



Beach tribute

Marking the centenary of Armistice Day on beaches from Cornwall to the Shetlands, enormous portraits of soldiers and others who gave their lives to the war effort were etched in the sand before being claimed by the sea. On Folkestone Beach, Wilfred Owen's portrait was washed away shortly before the two-minute silence.



Owen's portrait disappearing under the tide at

Folkestone, a major embarkation point for troops travelling to the battlefields

CREDIT: REUTERS

LIVE MUSIC FOR THE NEW YEAR

Saturday 26 Jan 2019

Vera van Heeringen Trio

Time: 8pm (doors open 7pm)

Tickets: £10 (children £5)

Music comes sparkingly alive with consummate guitarist/songwriter Vera, supported by Dave Luke (guitar/vocals/mandolin) and Andy Seward (double bass).

UPCOMING MUSIC

Edgelarks - Friday 22 March

Zoë Gilby Duo - Saturday 25 May

For further information or to book, see our [website](#) or 'phone 01691 657575. Please pay at time of booking; also let us know if you require wheelchair space or have any other specific requirements.



WORKSHOPS & COURSES

Sessions take place at the Willow Gallery's Dunbabin Room. Some courses are suitable for beginners, others for those with more expertise. Small class sizes allow plenty of individual attention.

LEFT: Exploring Trees through Batik with Jenny O'Leary

Book [online](#), by 'phone (01691 657575) or in person. For **Lifelong Learning courses**, please book through **Aberystwyth University** (01970 621580 / learning@aber.ac.uk). Classes previously listed and not appearing below are now full. **Please check our [website](#) for further details plus any materials you need to bring (and also for new courses as they are added over the coming months).**

Exploring Trees through Batik with Jenny O'Leary

Sat 1 Dec

Time: **10am-4pm** Cost: **£45**

Use hot wax, bleach and inks to create pieces of work on the theme of trees.

Embroidered Box with Suzette Smart

Sat 8 Dec

Time: **10am-4pm** Cost: **£50**

Create a colourful box with fabric collage, free machine embroidery and creative hand stitching.

Woodland Landscapes with Tereska Shepherd

Commencing Tues 12 March 2019

Time: **10.30am-4pm** Cost: **£110**

On this 4-session **Lifelong Learning** course extending over four months (March-June), use different art techniques to capture the characteristics of different tree species and woodland habitats.



CHILDREN'S ACTIVITIES

After-school & half-term activities for ages 6-13

Fun and informal art and craft activities.
For more information, please contact Education Officer **Jenny O'Leary** at the Gallery.

OTHER CLASSES

Lindy Hop with Adie

Mondays

Beginners 7pm / Improvers 8pm
£5 per week
Contact: 07980 291311

Yoga with Betty

Fridays, 10-11.30am

Mixed ability
Contact: **01938 554894**

Extending our best wishes for
the season and a safe &
peaceful new year

Many thanks for your support

We hope we'll see you in 2019

RIGHT: From a selection of cards by HAZEL McNAB



ABOUT US

A not-for-profit Community Interest Company, Oswestry's Willow Gallery hosts regularly-changing exhibitions throughout the year. Other events include live music, workshops and talks, while in the gallery shop there is always an interesting selection of arts and crafts to browse. There are also regular craft fairs. On-site Willow Eatery is a great spot to enjoy homemade cakes, snacks and lunch options.

We look forward to welcoming you.

CONTACT US

To contact the Willow Gallery:

Tel: 01691 657575

email: willowgalleryoswestry@gmail.com

Website: www.willowgalleryoswestry.org

Facebook: [Willow](#)

Address: 56 Willow Street, Oswestry, Shropshire SY11 1AD

[Add us to your address book](#)

To contact the Willow Eatery:

Tel: 07773 720425

email: willoweatery@gmail.com

Address: 56 Willow Street, Oswestry, Shropshire SY11 1AD

Gallery open: Mon-Sat 9.30am-5pm

Eatery open: Mon-Sat 9.30am-4.30pm Closed

Sundays/Bank Holidays Christmas/New Year

closing:

Gallery CLOSING Christmas Eve 1pm

RE-OPENING Saturday 5 Jan

Eatery CLOSING Saturday 22 Dec

RE-OPENING Monday 7 Jan



Copyright © 2018 The Willow Gallery

All rights reserved

You are receiving this email as you've signed up to the Gallery's mailing list

Our mailing address is:

56 Willow Street

Oswestry

Shropshire SY11 1AD

United Kingdom

Want to change how you receive these emails?

You can [update your preferences](#) or [unsubscribe from this list](#)